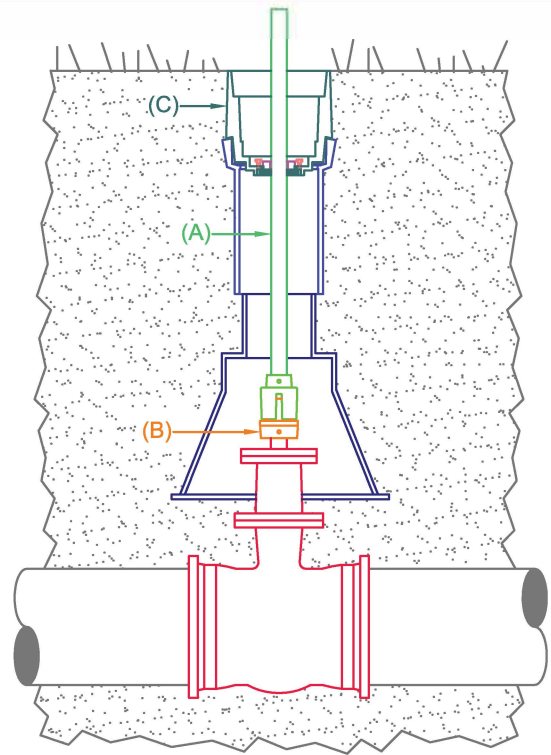


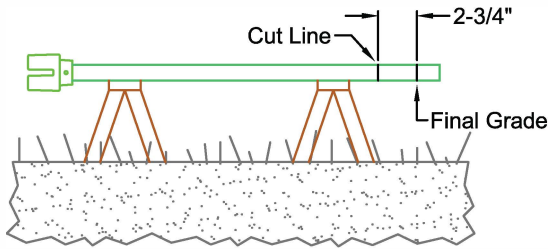
1. Measuring the length of the extension stem

- a. Install 1-1/4" square extension stem (A) into valve box and onto the 2" square nut of the valve (B). The extension stem is furnished without a 2" square nut at the top, which will be added later.
- b. Place the housing adapter (C) over the extension stem and inside the top section on the valve box.
- c. Adjust the valve box so the top surface of the housing adapter is flush with final grade.
- d. Using a straight-edge across the top of the housing adapter, mark the final grade line on the extension stem.



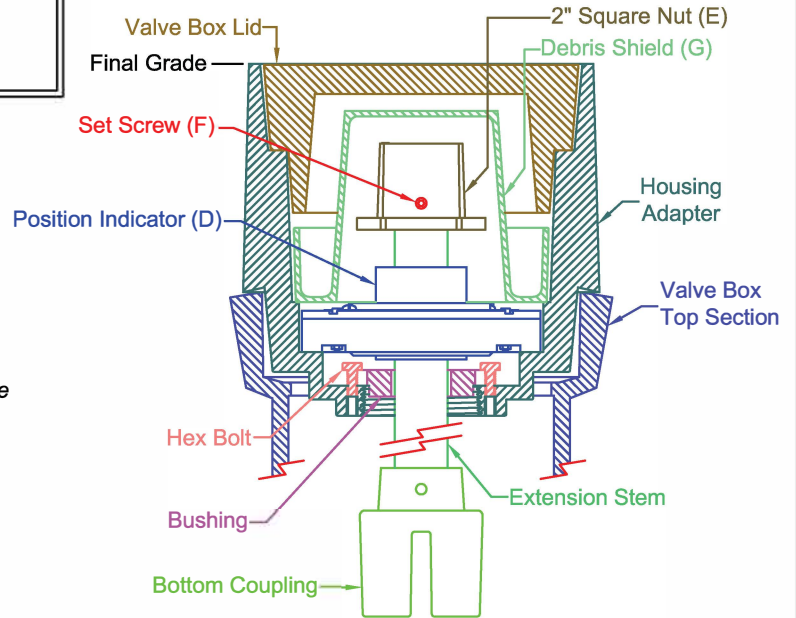
2. Cutting the extension stem

- e. Remove the housing adapter and extension stem from the valve box, and measure 2-3/4" below the final grade line marked in step 1. This is the "cut line".
- f. Cut the extension stem at the "cut line" and deburr any sharp edges.



3. Assembly of Position Indicator & Extension Stem

- g. Replace the shortened extension stem back into the valve box and onto the 2" square nut of the valve, then replace the housing adapter back into the top section of the valve box.
- h. With the valve in the closed position, place the position indicator (D) over the extension stem and lower into the housing adapter. Be sure the flat sides on the position indicator are parallel to the flat sides in the housing adapter. *Note: Align indicating arrow to point at "0" on the "CLOSED" characters before installing over extension stem, per illustration A below.*
- i. Place the 2" square nut (E) onto the extension stem, then tighten the set-screw (F) to secure the 2" square nut to the extension stem.

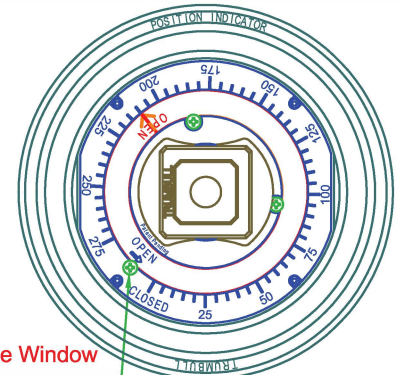
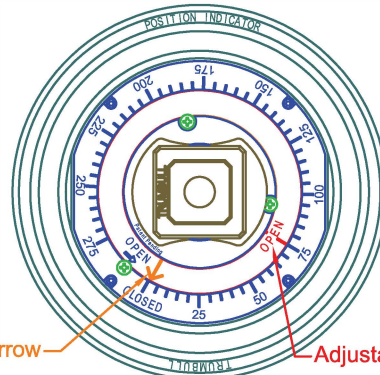


4. Calibration & Completion

- j. Rotate the 2" square nut until the valve is fully open, as the indicating arrow measures the # of turns to operate the valve. Align the "OPEN" characters on the adjustable window to the indicating arrow, per Illustration B. Secure the adjustable window by tightening the three Phillips head screws. After calibration the valve may be closed, which will bring the indicating arrow back to "0".
- k. Place the debris shield (G) over the position indicator and inside the housing adapter.
- l. Place the valve box lid over the debris shield and inside the housing adapter.

Illustration A
(Before Calibration)

Illustration B
(After Calibration)



Indicating Arrow, Adjustable Window, Phillips Head Screw

Drawn by: BJE

Drawing revision:

TRUMBULL MANUFACTURING

Position Indicator Installation

Date
4/13/10

Rev. A
Date
4/14/10

Youngstown, Ohio
www.trumbull-mfg.com

Installation type: Buried valves
Stem type: 1-1/4" Square stem, 1 piece