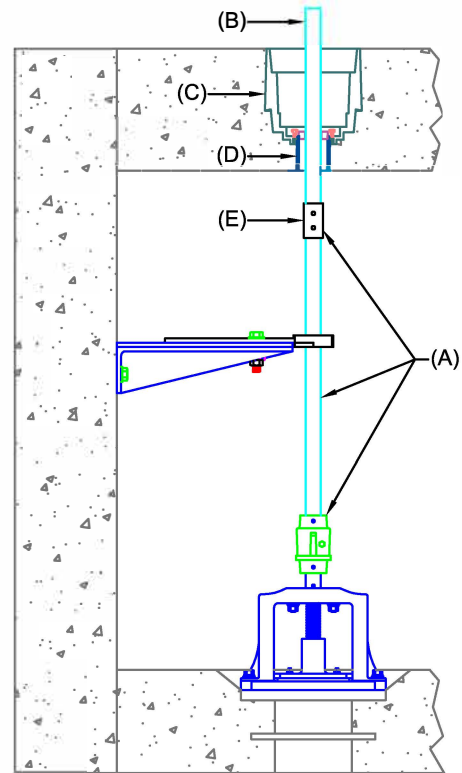


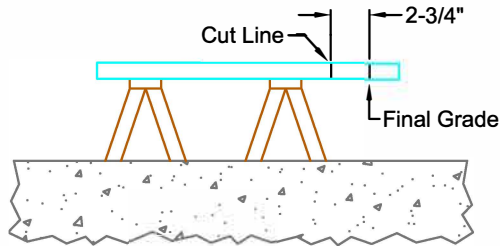
**1. Measuring the length of the Stub Shaft**

- a. After installing the primary extension stem (A), which terminates below the floor slab, insert the square stub shaft (B) through the housing adapter (C), pipe nipple (D) and into the stem connector (E).
- b. Using a straight-edge across the top of the housing adapter, mark the final grade line on the stub shaft.



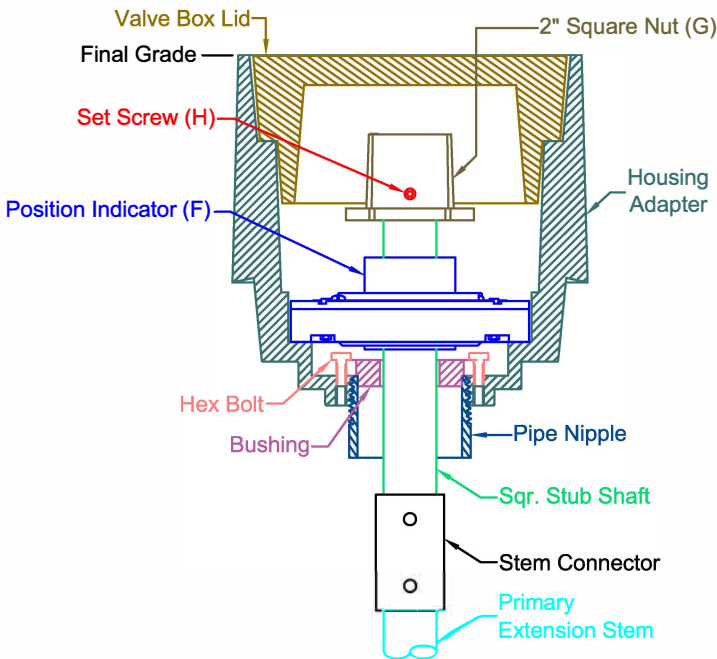
**2. Cutting the Stub Shaft**

- c. Remove the stub shaft from the housing adapter, and measure 2-3/4" below the final grade line marked in step 1. This is the "cut line".
- d. Cut the stub shaft at the "cut line" and deburr and sharp edges.



**3. Assembly of Position Indicator & Stub Shaft**

- e. Replace the shortened stub shaft back through the housing adapter, pipe nipple and into the stem connector, and then pin the two components together below the floor slab.
- f. With the valve in the closed position, place the position indicator (F) over the stub shaft and lower into the housing adapter. Be sure the flat sides on the position indicator are parallel to the flat sides in the housing adapter. *Note: Align indicating arrow to point at "0" on the CLOSED characters before installing over stub shaft, per Illustration A below.*
- g. Place the 2" square nut (G) onto the stub shaft, then tighten the set screw (H) to secure the 2" square nut to the stub shaft.

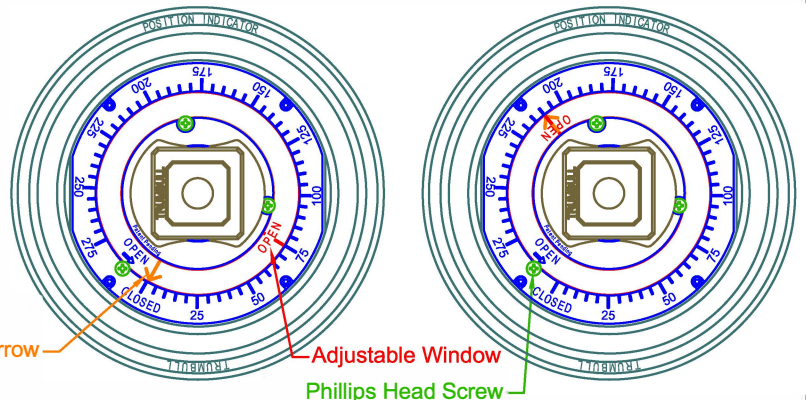


**4. Calibration & Completion**

- h. Rotate the 2" square nut until the valve is fully open, as the indicating arrow measures the # of turns to operate the valve. Align the "OPEN" characters on the adjustable window to the indicating arrow, per Illustration B. Secure the adjustable window by tightening the three Phillips head screws. After calibration the valve may be closed, which will bring the indicating arrow back to "0".
- i. Place the valve box lid inside the housing adapter.

**Illustration A**  
(Before Calibration)

**Illustration B**  
(After Calibration)



Drawn by: BJE

Drawing revision:

**TRUMBULL MANUFACTURING**

**Position Indicator Installation**

Date  
5/10/12

Rev.      Date  
---      ---

Youngstown, Ohio  
www.trumbull-mfg.com

Installation type: Floor Box  
Stem type: Round Stem, Square Stub Shaft