



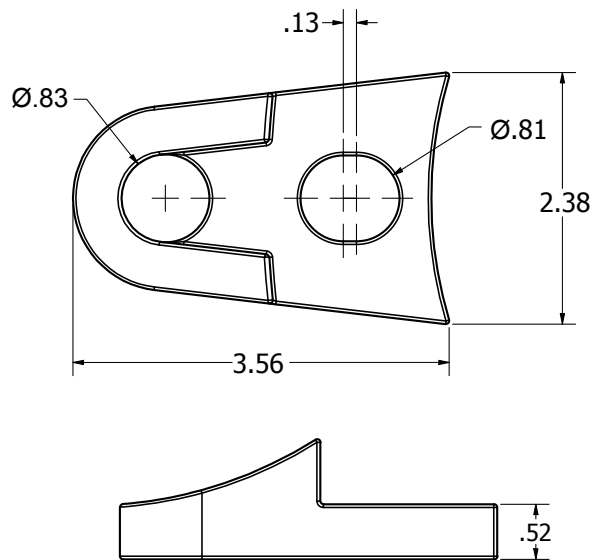
TIE LUGS

MODEL TMDTL



DESCRIPTION:

- **Material:** Ductile Iron, 80-55-06, per ASTM A536
- **Sizes:** Designed for use on sizes 4" through 24" pipe; to facilitate the restraining of pipe joints to prevent pull out
- **Use:** Installed between MJ Bell and MJ Gland. To be used with 3/4" rod with maximum load of 7,500 lbs.



The number of restraining rods required for a specific application must be carefully engineered. The engineer must take into account factors such as pipe diameter(s), peak pressures, deflections, and other key variables, when determining the correct number of TIE LUGS to be used.

Note: The chart to the right shows the minimum number to be used, for sizes up to 16".

MINIMUM TIE LUGS REQUIRED FOR EACH MJ BELL									
PIPE SIZE (In.)	WORKING PRESSURE (PSI)*								
	100	125	150	200	225	250	300	325	350
4"	2	2	2	2	2	2	2	2	2
6"	2	2	2	2	3	4	3	4	4
8"	2	2	3	4	4	6	6	6	6
10"	4	4	4	6	6	8	8	8	NR
12"	4	4	6	8	8	8	NR	NR	NR
14"	5	6	8	10	NR	NR	NR	NR	NR
16"	6	8	10	12	NR	NR	NR	NR	NR

PROJECT	APPROVAL STAMP
PROJECT:	<input type="checkbox"/> APPROVED
ADDRESS:	<input type="checkbox"/> APPROVED AS NOTED
ENGINEER:	<input type="checkbox"/> NOT APPROVED
SUBMITTAL DATA:	REMARKS:
NOTES 1:	
NOTES 2:	